

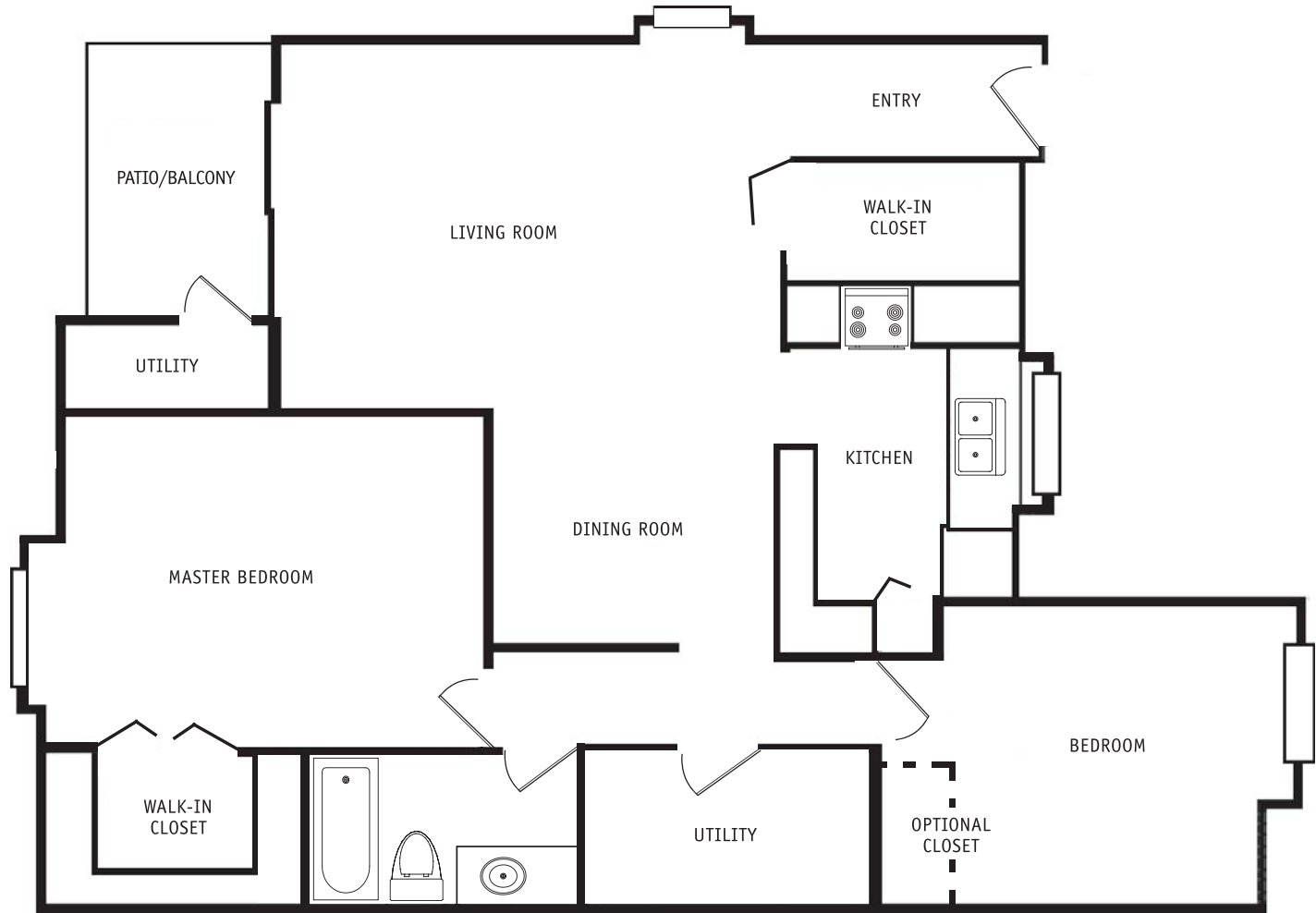
# The PINE

## 2 Bedroom 1 Bathroom

1,045 Lower Unit (includes square footage of patio)  
1,055 Upper Unit (includes square footage of balcony)

### FEATURES

- Private individual entries
- Master suite with extra large walk-in closet
- Second bedroom or den
- Euro-style kitchen with pantry, dishwasher, oven/range, disposal & refrigerator
- Formal dining room
- Living room with private balcony/patio attached
- New plush carpeting
- Full size laundry hook-ups
- Individual furnace, A/C and hot water heater
- In-unit storage space
- Private carport
- Intercom systems to front entry in upper units



30545 Crest Forest  
Farmington Hills, MI 48331

248.487.4100 phone

866.242.3355 toll-free

[www.brgcustomhomes.com](http://www.brgcustomhomes.com)

All measurements are approximate and may vary from plan to plan.  
Plans, layouts, sizes and specifications may vary and are subject to change without notice or obligation.

